

Livestock Presentation Policy



AFFCO Livestock Presentation Policy

The Livestock Presentation Policy is guidance for farmers on how to present your stock to the processing plant to ensure improved returns due to better presentation standards.

The policy is designed to be a positive form of reporting that will assist farmers in achieving high levels of quality livestock presentation.

Acceptable:

- Well presented stock that are emptied out prior to transportation
- Require less time and handling in the stockyards
- Carcass contamination is eliminated during processing
- Minimise carcasses downgraded or placed on detain rail
- Carcasses eligible for chilled export
- Positive impact on AFFCO market
- Greater returns to AFFCO
- **Greater returns to you, the farmer**

Unacceptable:

- Poorly presented stock that are not emptied out, dags/dirt and are faecal stained
- Require extra time and handling in the stockyards
- Carcass contamination occurs during processing
- Processing is slowed or stopped
- Carcasses are placed on detain rail and contamination is removed, which can affect grade of carcass and quantity of saleable product
- Carcasses ineligible for chilled export
- Negative impact on AFFCO market
- Lower returns to AFFCO
- **Lower returns to you, the farmer**

QUALITY BEGINS ON THE FARM



Animal Status Declaration:

All stock sent to AFFCO plants must be accompanied by, the signed original (or faxed copy), of a correctly filled out Animal Status Declaration (ASD).

The ASD is to be completed by a person in charge of the animals who has the knowledge and authority to answer all the applicable questions. The person in charge of the animals could be the owner, farm manager or saleyard operator; but does NOT include transport operators.

Transport operators are not to prepare ASD's themselves, but are required to transfer the ASD when provided with the animals being moved.

Selection of Stock / Best Practice:

Muster

- Do not rush the animals
- Avoid unnecessary use of dogs, rattles. Try and work calmly and quietly

Selection

- All animals shall be outside the withholding period of animal treatments such as dips, vaccines and drenches etc.
- All stock must meet minimum presentation standards to be eligible for processing
- It is recommended that any animal with horns longer than 20cm must have horns removed a minimum of three weeks prior to processing

Preparation

- Ensure stock are emptied out for a minimum of 4 hours before transporting
- Animals must have access to fresh drinking water
- Horned animals to be penned separately
- Cattle must be clearly identified with approved cattle marking paint or owner's brand

Loading

- Ensure that stock crates are clean before stock is loaded
- Animals must be able to stand and bear weight on all limbs and be fit enough to withstand the journey without causing undue stress or pain
- Any animal with any leg broken must not be transported for slaughter. An animal with any leg broken must not be transported for any other reason unless it has been treated by a veterinarian

Animals that are likely to give birth during transport must not be transported.

AFFCO accepts there are some hygiene issues with livestock presentation that may be beyond the suppliers control. This DOES NOT include dags. It is the supplier responsibility to ensure all sheep and lambs are daged. This includes anal, leg, scrotum dags and belly crutching if necessary.

Animal Welfare:

It is a policy of the AFFCO Livestock Program that the supplying farms shall:

- Comply with all relevant legislation:
- Ensure the health and welfare of the stock based on The Five Freedoms :
 - freedom from thirst, hunger and malnutrition;
 - freedom from discomfort ;
 - freedom from pain, injury or disease ;
 - freedom from fear and distress;
 - freedom to display most normal patterns of behaviour.
- Ensure the Agricultural Compounds and Veterinary Medicines Act 1997 is followed
- Be managed by competent stockmen and personnel and trained staff
- Ensure the safety and welfare of animals during transport
- Ensure the environment is protected and cared for
- Ensure animals showing signs of injury must be accompanied by a veterinary certificate

SHEEP

Sheep should be at least 3 days off shears with no open shearing cuts or grazes.

Stock Classification:

Grade 1

- Good presentation and require no more than a single standard washing procedure
 - Clean wool
 - Free of all dags/dirt
 - Emptied out before transporting
 - Woolpull **less than** 0.8kg (approx. 40mm in length) or clean and bellied

Grade 2

- Well presented but require more than the standard washing procedure to be acceptable for processing, due to any of the following
 - Rewashing required to remove faecal staining, dust or dirt
 - Not all dags removed
 - Not emptied out before transporting
 - Woolpull **greater than** 0.8 kg (approx. 60mm in length)

Grade 3

- Poorly presented stock that is unacceptable for processing in current condition, due to
 - Three or more items for grade 2 criteria
 - Rewashing required to remove excessive faecal staining, dust or dirt
 - Excessive dags

Grade 3 stock may be **returned to the supplier.**

DD Dags / Dirt

EW Excess Wool (More than 40mm (approx 0.8kg)

NE Not Emptied / Pen stained

H Horned



ACCEPTABLE



UNACCEPTABLE

Winter kill period “Shorn / Bellied Incentive”:

To receive the incentive:

- Wool length **less than** 40mm (wool pull of approx 0.8kg) **or if it is greater:**
 - A strip of wool must be removed from crutch through to and including the brisket
 - This belly strip removal must be at least 3 comb widths or a full belly removal
 - Socks must be removed
 - Rams must have “purse” cleaned of wool and dags

Stock processed between 31st March and 30th November (South Island) **must be bellied** (ideally 2-7 days prior to processing) **or have** a wool pull less than 40mm

Stock processed between 1st June and 30th September (North Island) **must be bellied** (ideally 2-7 days prior to processing) **or have** a wool pull less than 40mm

BEEF

Horned cattle must be penned separately or with their own mob or peers.

All cattle must have a registered (AHB or MINDA or equivalent) eartag.

Care must be taken when transporting adult bulls that may fight. They must be penned separately.

In-calf cows and heifers should not be transported within 21 days of calving.

Lactating dairy cows without calves at foot should be milked at regular intervals which do not exceed 24 hours. If dairy cows in early lactation are going to be transported over long distances, veterinary advice should be obtained.

Stock Classification:

Grade 1

- Good presentation
 - Clean
 - Free of all dags/dirt
 - Emptied out before transporting

Grade 2

- Well presented but may require washing to be acceptable for processing, due to any of the following:
 - Rewashing required to remove faecal staining, dust or dirt
 - Not all dags/dirt removed
 - Not emptied out before transporting

Grade 3

- Poorly presented stock that is unacceptable for processing in current condition, due to:
 - Rewashing required to remove excessive faecal staining, dust or dirt
 - Excessive dags/dirt

Grade 3 stock may be **returned to the supplier.**

DD Dags / Dirt

NE Not Emptied / Pen stained

H Horned

I Injured

E Emaciated / Weak

W Wild / Stressed



ACCEPTABLE



UNACCEPTABLE

DEER

General Guidelines:

The following must not be transported:

- deer with young at foot less than a month old,
- deer that are likely to injure other animals or people,
- deer that have been weaned in the last 7 days,
- deer with bleeding antler stubs, or in the first week after velveting
- deer with velvet longer than 60 mm (except for master breeding stags) - see Deer Transport Operators Quality Assurance Programme (1993-94), NZ Game Industry Board, for details.
- All deer must have a registered (AHB, MINDA or equivalent) eartag

The following should be transported or penned separately:

- deer of different species,
- hinds/does,
- deer with antlers longer than 60 mm,
- young animals,
- animals differing greatly in size

Deer with broken or bleeding antlers or antler stubs will not be accepted for transport.

If any deer shows signs of heat stress or dehydration (excessive panting, a dry mouth, abnormal response to normal stimuli) the deer must be hosed with water or released to pasture.

Stock Classification:

Grade 1

- Good presentation
 - Clean
 - Free of all dags/dirt
 - Emptied out before transporting

Grade 2

- Well presented but may require washing to be acceptable for processing, due to any of the following:
 - Rewashing required to remove faecal staining, dust or dirt
 - Not all dags/dirt removed
 - Not emptied out before transporting

Grade 3 stock may be **returned to the supplier.**

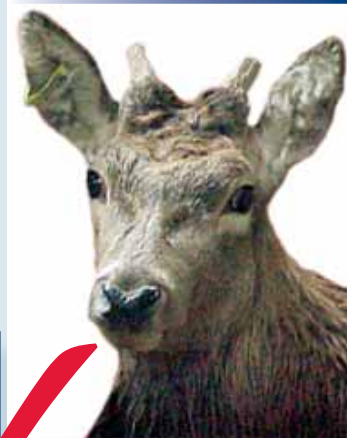
DD Dags / Dirt

NE Not Emptied / Pen stained

H Horned

I Injured

W Wild / Stressed



ACCEPTABLE

GOATS

General Guidelines:

- No female goats to be consigned within 48 hours of kidding
- Minimum acceptable weight is 6kg (approx 4 months)
- No goats with a horn length of more than 20 cm
- No large goats → 750mm at the shoulder
- No large billy goats (greater than 3 years)

Stock Classification:

Grade 1

- Good presentation
 - Clean
 - Free of all dags/dirt
 - Emptied out before transporting

Grade 2

- Well presented but may require washing to be acceptable for processing, due to any of the following
 - Rewashing required to remove faecal staining, dust or dirt
 - Not all dags/dirt removed
 - Not emptied out before transporting

Grade 3

- Poorly presented stock that is unacceptable for processing in current condition, due to
 - Rewashing required to remove excessive faecal staining, dust or dirt
 - Excessive dags/dirt

Grade 3 stock may be **returned to the supplier.**

DD Dags / Dirt

NE Not Emptied / Pen stained

H Horned

I Injured

E Emaciated / Weak

W Wild / Stressed



UNACCEPTABLE



Bobby Calves and Unweaned Calves

Calves must be in good health and strong enough to withstand the stressors of transportation.

Calf must be at least four days old prior to transport.

Calves must have a registered eartag securely attached to the ear.

Calves weighing less than 15 kg at birth (which are usually too premature to survive), as well as those with severe physical defects and painful congenital defects, should be destroyed and not transported.

Calves must be transported in vehicles with enclosed fronts to prevent windchill. Covers must be positioned to give maximum protection to the calves but allow for adequate ventilation. Trucks and trailers must not be parked in such a way that the animals might suffer from extreme heat or cold.

Vehicles used to transport calves must be cleaned before calves are loaded.

Electric prodders and dogs must not be used on calves.

A journey transporting calves must not be undertaken if the first calf collected will take more than 12 hours to reach the final destination.



